

88 HELEN STREET, SEFTON STORMWATER CONCEPT DESIGN



LOCALITY PLAN
NOT TO SCALE
COPYRIGHT OF NEARMAP

DRAWING INDEX			
SHEET No.	DWG. No.	DRAWING TITLE	REV.
01	S01-SW100	COVER SHEET & DRAWING INDEX	A
02	S01-SW201	EROSION & SEDIMENT CONTROL PLAN & DETAILS	A
03	S01-SW301	STORMWATER CONCEPT DESIGN GROUND FLOOR PLAN	A
04	S01-SW302	STORMWATER CONCEPT DESIGN ROOF PLAN	A
05	S01-SW401	STORMWATER CONCEPT DESIGN DETAILS SHEET	A

PREPARED BY



S&G CONSULTANTS PTY LTD
SUITE 311, LEVEL 3
480 PACIFIC HIGHWAY
ST. LEONARDS, N.S.W. 2065
T: +61 2 8883 4239
Email: office@sgce.com.au
Web: www.sgce.com.au

ARCHITECT

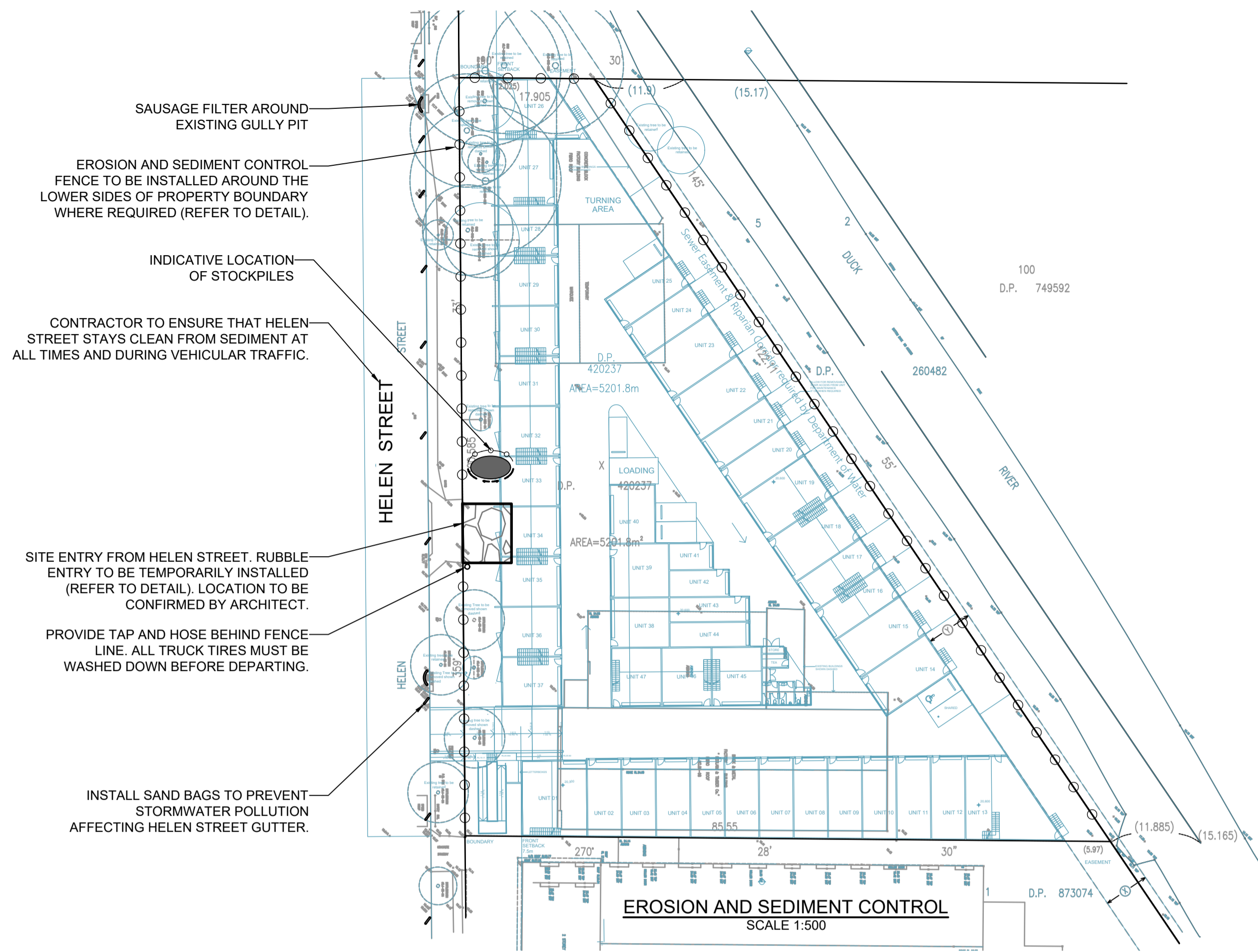
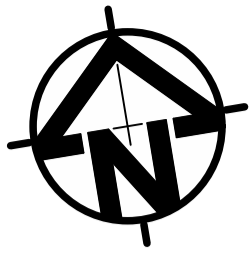
GELDER GROUP
ARCHITECTS

CLIENT

LA SALLE GROUP

LGA





EROSION AND SEDIMENT CONTROL
SCALE 1:500

GENERAL NOTES

1. THIS PLAN IS A CONCEPT PLAN ONLY FOR STORMWATER DISPOSAL & EROSION CONTROL. IT IS NOT SUITABLE FOR CONSTRUCTION. THIS PLAN SHOULD BE ADAPTED BY THE BUILDER DURING DEMOLITION, EXCAVATION & CONSTRUCTION PHASES TO ENSURE ADEQUATE PERFORMANCE.
2. ALL DRAINAGE LAYOUT & DETAILS ARE DIAGRAMMATIC & INDICATIVE ONLY. ACTUAL LOCATION, SIZES, LEVELS & GRADES MAY ALTER WHEN DETAIL DESIGN WORKS ARE DOCUMENTED.

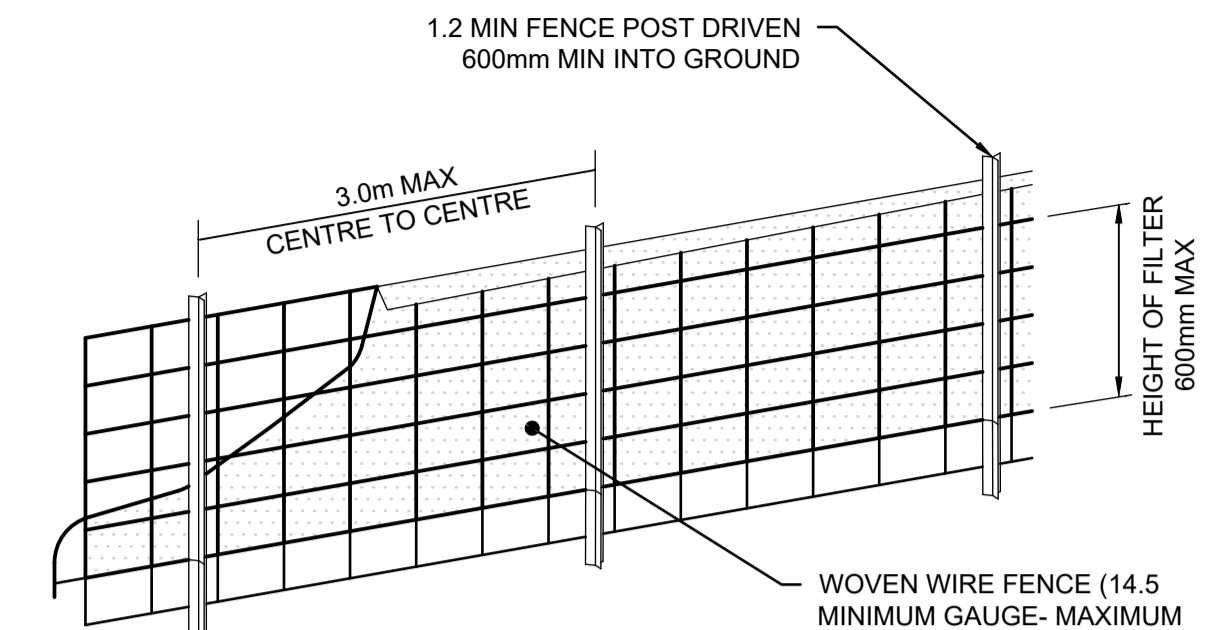
GEOTEXTILE INLET FILTER

GEOTEXTILE INLET FILTER IS PLACED IN EVERY PIT WITHIN THE SITE TO ENSURE THE RUNOFF WATER DURING CONSTRUCTION NOT ENTER THE PITS.

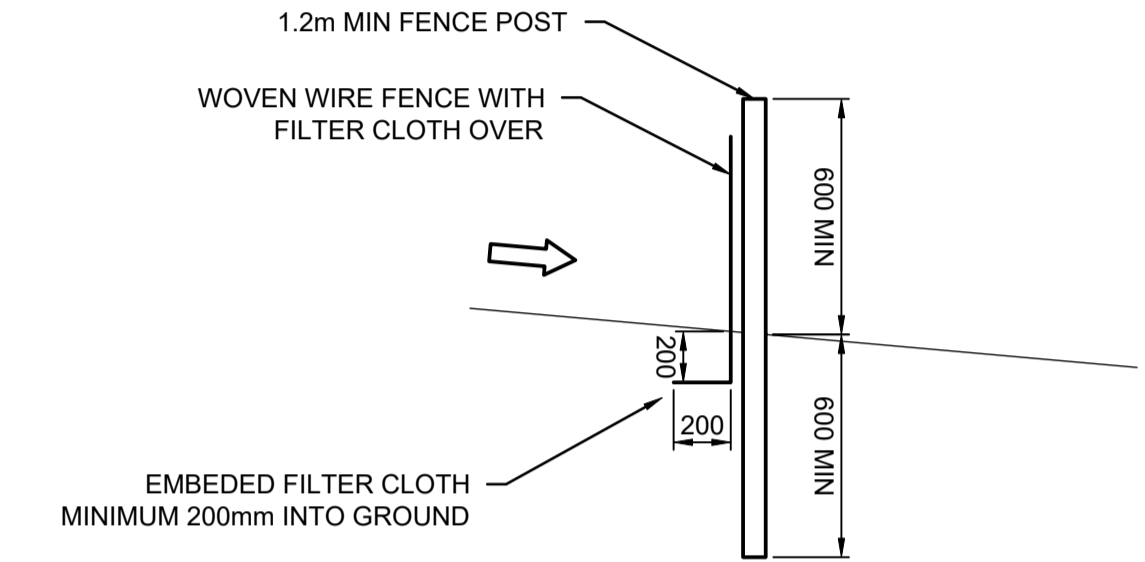
CLAY SOILS

A SYSTEM SHALL BE INSTALLED TO EITHER:

1. TRANSPORT STORMWATER RUNOFF WITH SUSPENDED SOLIDS FROM SITE VIA PUMP TRUCKS.
2. TREAT THE STORMWATER RUNOFF WITH SUSPENDED SOLIDS SO THE DISCHARGE WATER QUALITY TO COUNCIL STORMWATER DRAINAGE SYSTEM HAS A MAXIMUM CONCENTRATION OF SUSPENDED SOLIDS THAT DOES NOT EXCEED 50 MILLIGRAMS PER LITRE IN ACCORDANCE WITH THE PROTECTION OF THE ENVIRONMENT OPERATION ACT (POEO 1997) AND SHALL BE APPROVED BY LOCAL COUNCIL.



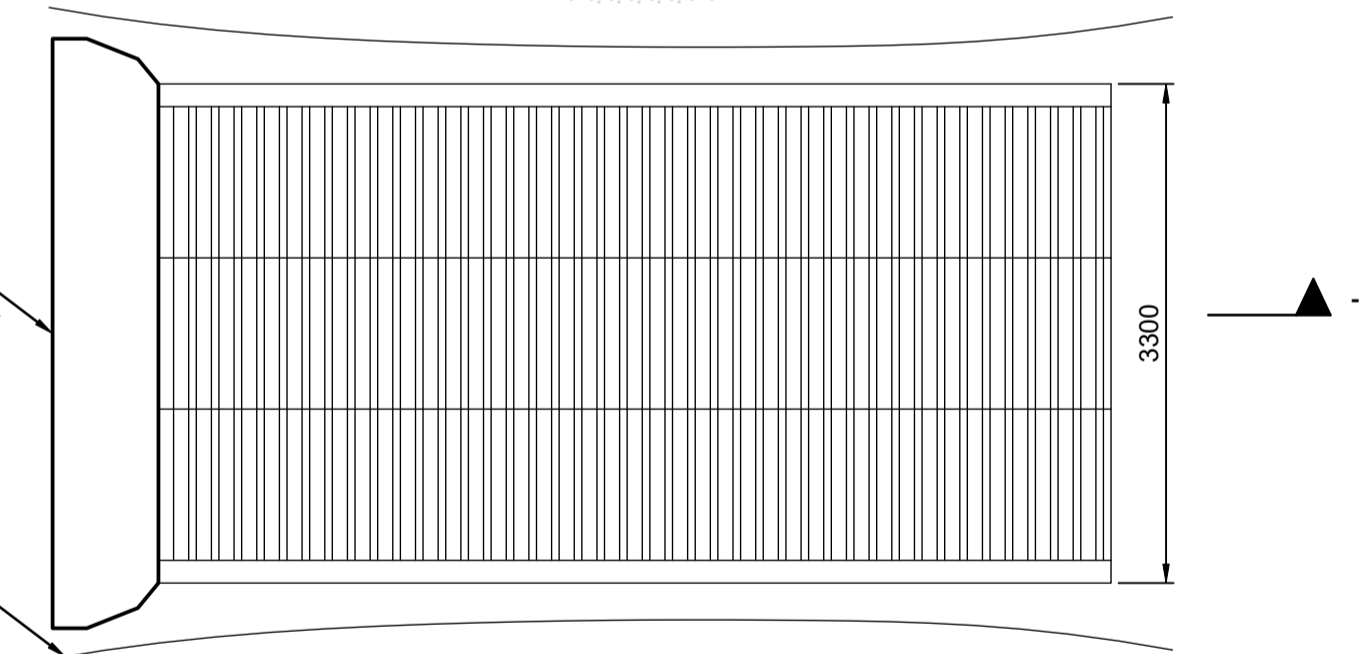
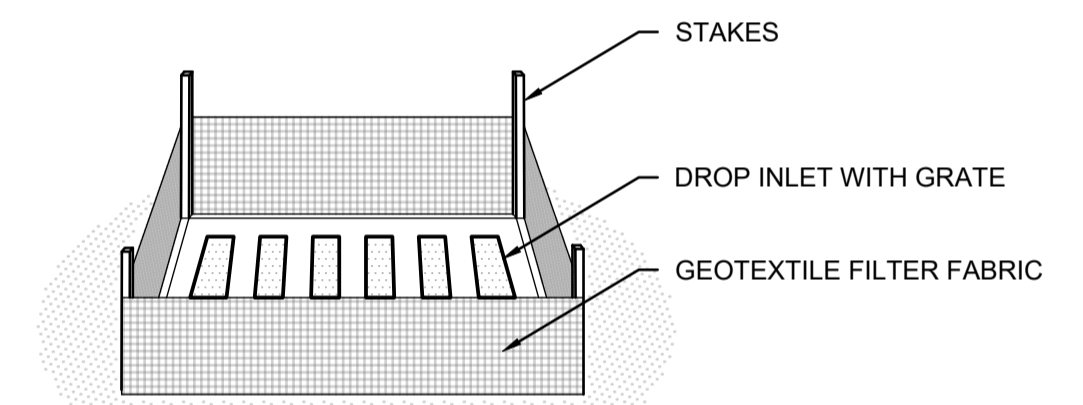
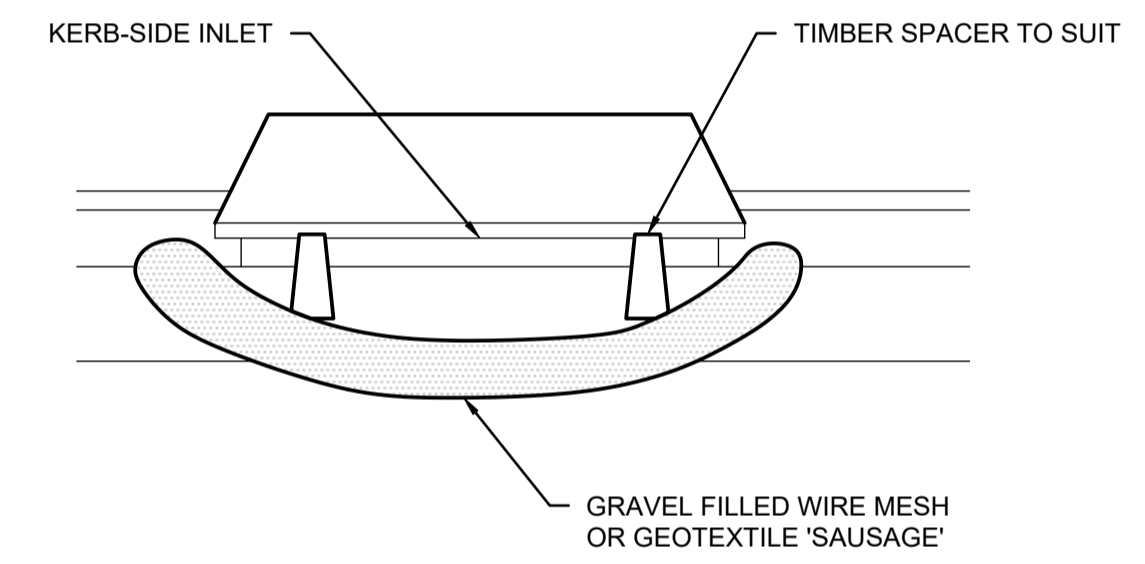
DIAGRAMMATIC VIEW



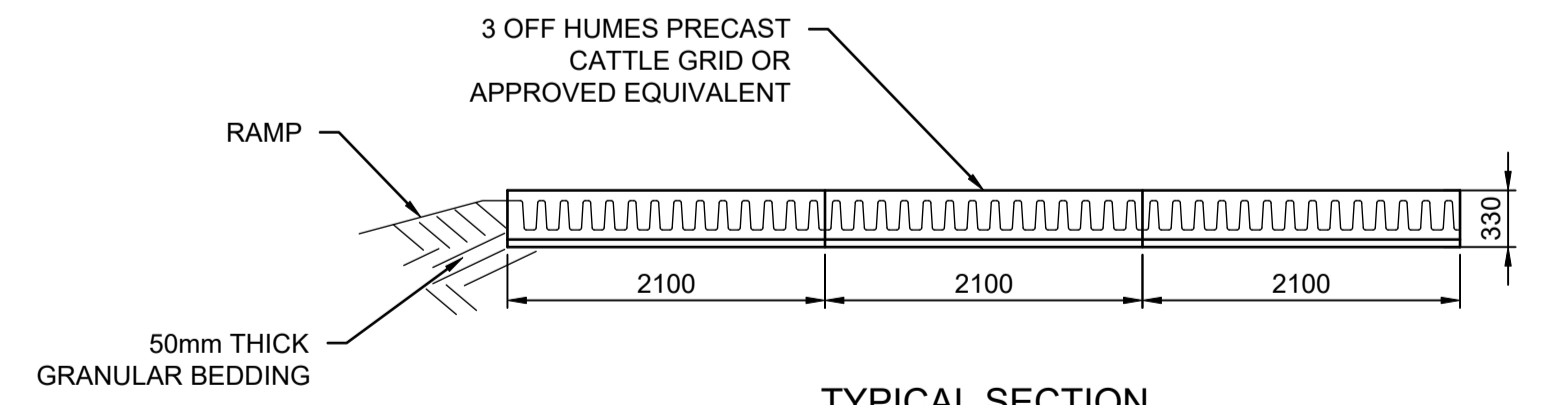
TYPICAL SECTION

SEDIMENT FENCE

NOT TO SCALE



PLAN VIEW



TYPICAL SECTION

'CATTLE GRID' ALTERNATIVE

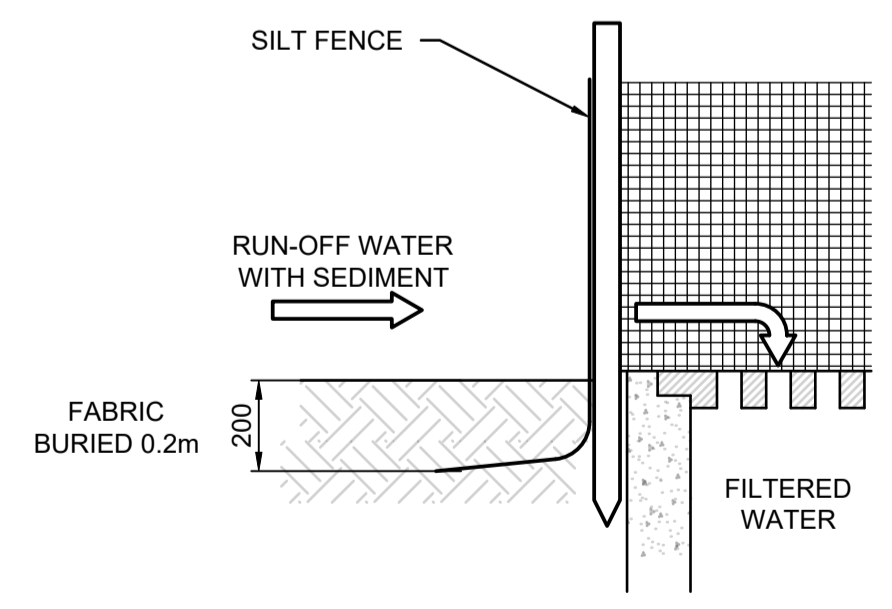
TEMPORARY CONSTRUCTION EXIT - NOT TO SCALE

EROSION & SEDIMENTATION CONTROL NOTES

1. CONTRACTOR SHALL PROVIDE SEDIMENT FENCING MATERIAL DURING CONSTRUCTION TO THE LOW SIDE OF THE WORKS. THE SEDIMENT FENCING MATERIAL TO CYCLONE WIRE SECURITY FENCE. SEDIMENT CONTROL FABRIC SHALL BE AN APPROVED MATERIAL (EG. HUMES PROPEX SILT STOP) STANDING 300mm ABOVE GROUND & EXTENDING 150mm BELOW GROUND.
2. EXISTING DRAINS LOCATED WITHIN THE SITE SHALL ALSO BE ISOLATED BY SEDIMENT FENCING MATERIAL.
3. NO PARKING OR STOCKPILING OF MATERIALS IS PERMITTED ON THE LOWER SIDE OF THE SEDIMENT FENCE.
4. GRASS VERGES SHALL BE MAINTAINED AS MUCH AS PRACTICAL TO PROVIDE A BUFFER ZONE TO THE CONSTRUCTION SITE.
5. CONSTRUCTION ENTRY/EXIT SHALL BE VIA THE LOCATION NOTED ON THE DRAWING. CONTRACTOR SHALL ENSURE ALL DROPPABLE SOIL & SEDIMENT IS REMOVED PRIOR TO CONSTRUCTION TRAFFIC EXITING SITE. CONTRACTOR SHALL ENSURE ALL CONSTRUCTION TRAFFIC ENTERING & LEAVING THE SITE DO SO IN A FORWARD DIRECTION.

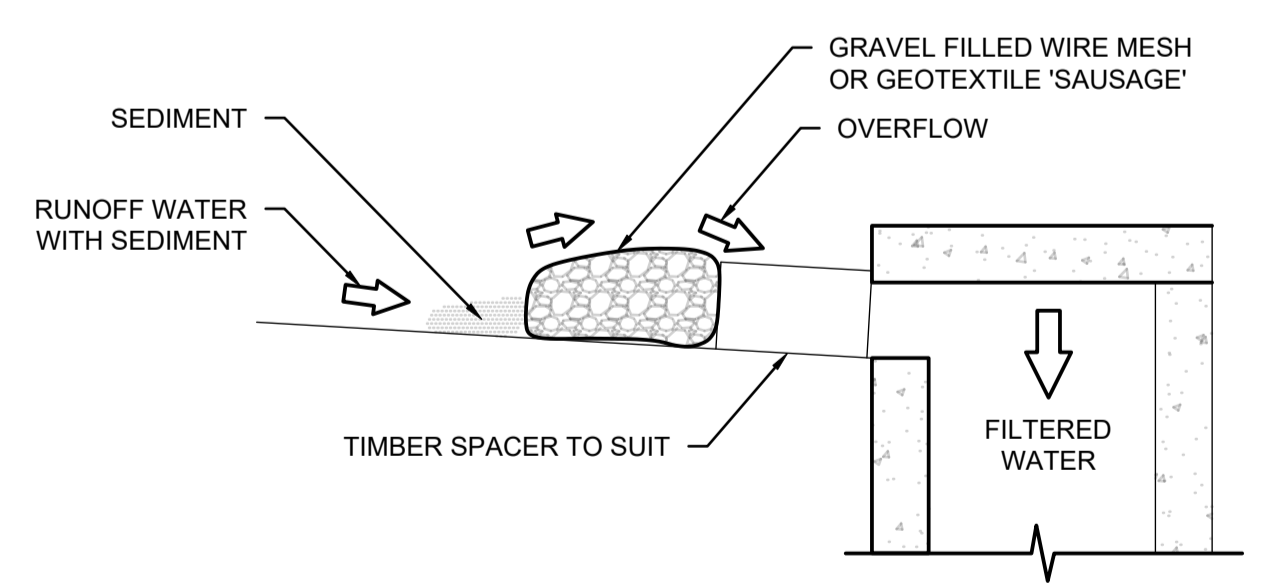
CONSTRUCTION NOTES

- FABRICATE A SLEEVE MADE FROM GEOTEXTILE OR WIRE MESH LONGER THAN THE LENGTH OF THE INLET PIT
- FILL THE SLEEVE WITH 25mm TO 50mm GRAVEL
- FORM AN ELLIPTICAL CROSS-SECTION OF THE KERB INLET LEAVING A 100mm GAP AT THE TOP TO ACT AS AN EMERGENCY SPILLWAY
- MAINTAIN THE OPENING WITH SPACER BLOCKS
- FORM A SEAL WITH THE KERBING AND PREVENT SEDIMENT BYPASSING THE FILTER
- FIT TO ALL KERB INLETS AT SAG POINTS



GEOTEXTILE INLET FILTER

NOT TO SCALE



GRAVEL INLET FILTER (SAUSAGE)

NOT TO SCALE

A:\Projects\2024\20240057 - 88 Helen Street, Sefton\CD\01 - Erosion & Sediment Control\01 - Erosion & Sediment Control.dwg

Issuer internal sequence and revision history				
Issue	Last revision title	By	Date	Status
A	ISSUED FOR DA	CS	09.04.25	02
P02	PRELIMINARY ISSUE	CS	24.02.25	01
P01	PRELIMINARY ISSUE	CS	25.11.24	01

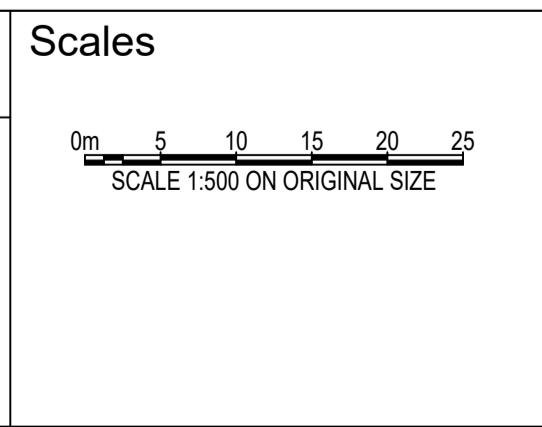
Reference Coordination Drawing			
Discipline	Drawing Title and Number	Date	Rev.
ARCH	STRUCT		
MECH			
ELEC			
HYD			
FIRE			
LANDS			
CIVIL			
SURVEY			

Quality Control	
DRAWN	DATE
CS	09.04.25
CHECKED	DATE
SH	09.04.25
DESIGNED	DATE
CS	09.04.25
VERIFIED	DATE
SH	09.04.25
APPROVED	DATE
SH	09.04.25

ENGINEERS AUSTRALIA
Chartered Professional Engineer
MEMBER

WARNING: THE DESIGNS, DRAWINGS, SPECIFICATIONS AND THE COPYRIGHT HEREIN REMAIN THE SOLE INTELLECTUAL PROPERTY OF S&G CONSULTANTS PTY LTD AND MUST NOT BE USED, COPIED, ALTERED OR REPRODUCED WHOLLY OR IN PART IN ANY FORM WITHOUT THE WRITTEN CONSENT OF S&G CONSULTANTS PTY LTD

DIMENSIONS NOT SHOWN TO BE CHECKED ON SITE. DO NOT SCALE OF THIS DRAWING. POSITIONS OF AUTHORITIES MAINS AND/OR EXISTING SERVICES ARE TO BE CHECKED PRIOR TO COMMENCEMENT OF WORK. REPORT ANY DISCREPANCIES TO THE CONSULTING ENGINEER FOR DECISION/CLARIFICATION BEFORE PROCEEDING WITH THE WORK. THIS DRAWING IS TO BE READ IN CONJUNCTION WITH THE SPECIFICATIONS AND OTHER CONSULTANTS' DRAWINGS.



Client
LA SALLE GROUP

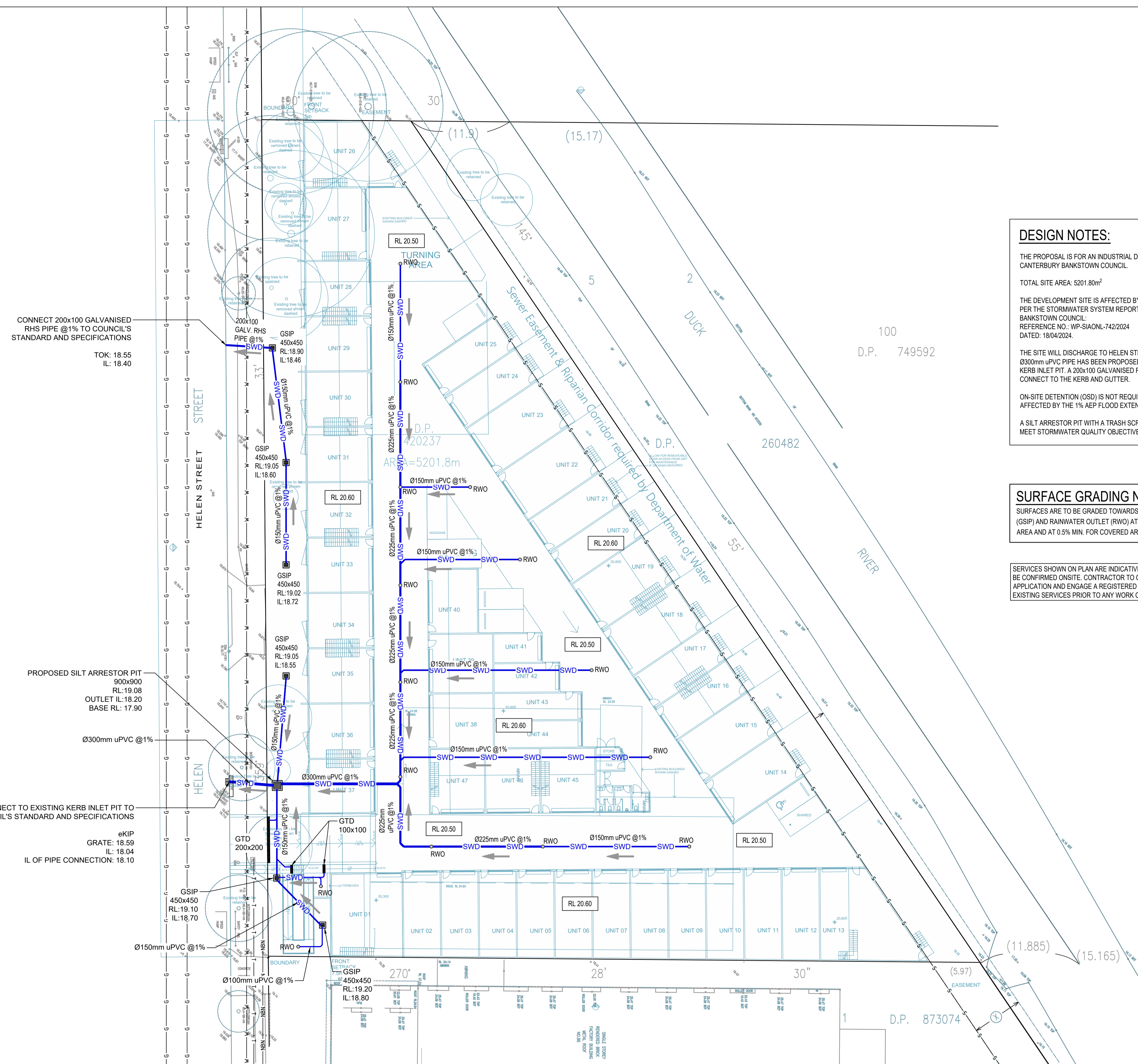
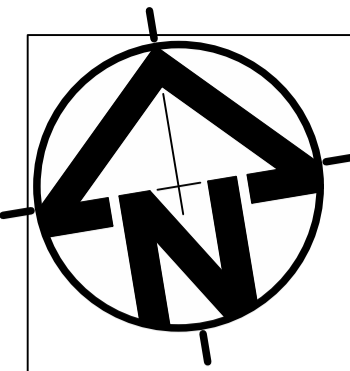
Architect
GELDER GROUP ARCHITECTS

S&G CONSULTANTS PTY LTD
SUITE 311, LEVEL 3
480 PACIFIC HIGHWAY
ST. LEONARDS, N.S.W. 2065
T: +61 2 8883 4239
Email: office@sgce.com.au
Web: www.sgce.com.au

A.B.N. 21 118 222 530

PROJECT
88 HELEN STREET, SEFTON
STORMWATER CONCEPT DESIGN

Status	
ISSUED FOR DA	
Drawing Title EROSION & SEDIMENT CONTROL PLAN & DETAILS	
Project No.	Set No. - Drg No.
20240057	S01-SW201
Sheet	Revision No.
02	A



CONNECT 200x100 GALVANISED RHS PIPE @1% TO COUNCIL'S STANDARD AND SPECIFICATIONS
 TOK: 18.55
 IL: 18.40

PROPOSED SILT ARRESTOR PIT
 900x900
 RL: 19.08
 OUTLET IL: 18.20
 BASE RL: 17.90

CONNECT TO EXISTING KERB INLET PIT TO COUNCIL'S STANDARD AND SPECIFICATIONS
 eKIP
 GRATE: 18.59
 IL: 18.04
 IL OF PIPE CONNECTION: 18.10

DESIGN NOTES:

THE PROPOSAL IS FOR AN INDUSTRIAL DEVELOPMENT LOCATED IN CANTERBURY BANKSTOWN COUNCIL.

TOTAL SITE AREA: 5201.80m²

THE DEVELOPMENT SITE IS AFFECTED BY THE 1% AEP FLOOD EXTENT AS PER THE STORMWATER SYSTEM REPORT PROVIDED BY CANTERBURY BANKSTOWN COUNCIL.
 REFERENCE NO.: WP-SIAONL-742/2024
 DATED: 18/04/2024.

THE SITE WILL DISCHARGE TO HELEN STREET VIA TWO CONNECTIONS. A Ø300mm uPVC PIPE HAS BEEN PROPOSED TO CONNECT TO THE EXISTING KERB INLET PIT. A 200x100 GALVANISED RHS PIPE HAS BEEN PROPOSED TO CONNECT TO THE KERB AND GUTTER.

ON-SITE DETENTION (OSD) IS NOT REQUIRED AS THE ENTIRE SITE IS AFFECTED BY THE 1% AEP FLOOD EXTENT.

A SILT ARRESTOR PIT WITH A TRASH SCREEN HAS BEEN PROVIDED TO MEET STORMWATER QUALITY OBJECTIVES.

SURFACE GRADING NOTE:

SURFACES ARE TO BE GRADED TOWARDS SURFACE INLET PIT (GSIP) AND RAINWATER OUTLET (RWO) AT 1% MIN. FOR UNCOVERED AREA AND AT 0.5% MIN. FOR COVERED AREA AS PER AS2890.

SERVICES SHOWN ON PLAN ARE INDICATIVE, EXACT DEPTH AND LOCATION TO BE CONFIRMED ONSITE. CONTRACTOR TO CARRY OUT DIAL BEFORE YOU DIG APPLICATION AND ENGAGE A REGISTERED SURVEYOR TO PEG OUT ALL EXISTING SERVICES PRIOR TO ANY WORK COMMENCING ONSITE.

Issue	Last revision title	By	Date	Status
A	ISSUED FOR DA	CS	09.04.25	02
P02	PRELIMINARY ISSUE	CS	24.02.25	01
P01	PRELIMINARY ISSUE	CS	25.11.24	01

Issuer internal sequence and revision history

1-preliminary	2-development application	3-construction certificate
4-tender	5-construction	6-other

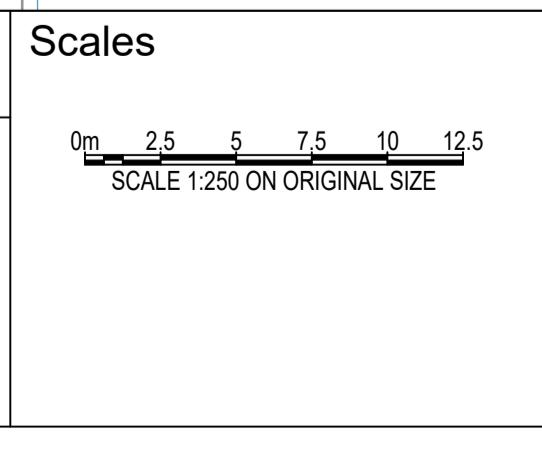
Discipline	Drawing Title and Number	Date	Rev.
ARCH	STRUCT		
MECH			
ELEC			
HYD			
FIRE			
LANDS			
CIVIL			
SURVEY			

Quality Control	DATE
DRAWN	09.04.25
CHECKED	09.04.25
DESIGNED	09.04.25
VERIFIED	09.04.25
APPROVED	09.04.25

ENGINEERS AUSTRALIA
 Chartered Professional Engineer
 MEMBER

WARNING: THESE DESIGN DRAWINGS, SPECIFICATIONS AND THE COPYRIGHT HEREIN REMAIN THE SOLE INTELLECTUAL PROPERTY OF S&G CONSULTANTS PTY LTD AND MUST NOT BE USED, COPIED, ALTERED OR REPRODUCED WHOLLY OR IN PART IN ANY FORM WITHOUT THE WRITTEN CONSENT OF S&G CONSULTANTS PTY LTD

DIMENSIONS NOT SHOWN TO BE CHECKED ON SITE. DO NOT SCALE OF THIS DRAWING. POSITIONS OF AUTHORITIES MAINS AND/OR EXISTING SERVICES ARE TO BE CHECKED PRIOR TO COMMENCEMENT OF WORK. REPORT ANY DISCREPANCIES TO THE CONSULTING ENGINEER FOR DECISION/CLARIFICATION BEFORE PROCEEDING WITH THE WORK. THIS DRAWING IS TO BE READ IN CONJUNCTION WITH THE SPECIFICATIONS AND OTHER CONSULTANTS' DRAWINGS.



Client
 LA SALLE GROUP

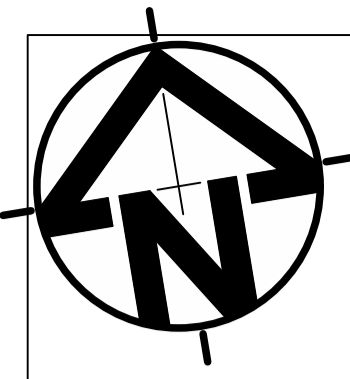
Architect
 GELDER GROUP ARCHITECTS

S&G CONSULTANTS PTY LTD
 SUITE 311, LEVEL 3
 480 PACIFIC HIGHWAY
 ST. LEONARDS, N.S.W. 2065
 T: +61 2 8883 4239
 Email: office@sgce.com.au
 Web: www.sgce.com.au
 A.B.N. 21 118 222 530

PROJECT
 88 HELEN STREET,
 SEFTON
 STORMWATER CONCEPT DESIGN

Status	ISSUED FOR DA		
Drawing Title	STORMWATER CONCEPT DESIGN GROUND FLOOR PLAN		
Project No.	Set No. - Drg No.	Revision No.	
20240057	S01-SW301	A	

Grid	Datum	Sheet
	A.H.D.	03



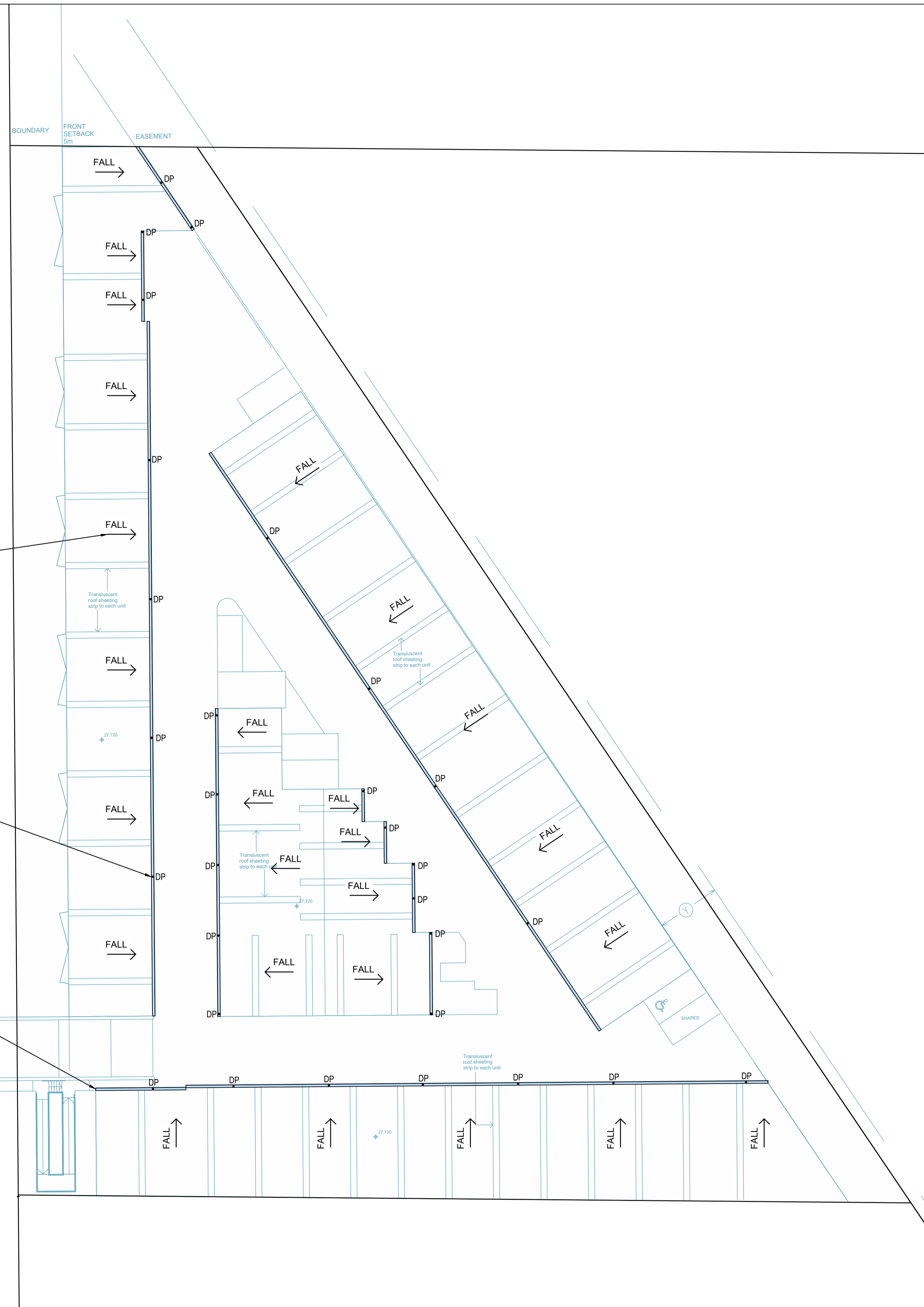
NOTE:
EAVES GUTTER SIZES AND DOWNPIPE LOCATIONS & SIZES ARE INDICATIVE AT DA STAGE. DETAILS TO BE SHOWN AT C.C. STAGE.

NOTE:
DOWNPIPES TO CONNECT TO STORMWATER SYSTEM.

ARROW DENOTES FALL OF ROOF (TYP.)

DOWNPIPE LOCATIONS ARE INDICATIVE AT DA STAGE - TO BE DETAILED AT C.C. STAGE (TYP.)

EAVES GUTTERS TO BE SIZED AT C.C. STAGE (TYP.)



A:\Projects\2024\20240057 - 88 Helen Street, Sefton\Drawings\1 - Stormwater.dwg
 1 - Preliminary Issue
 2 - Development Application
 3 - Construction Certificate
 4 - Tender
 5 - Construction
 6 - Other

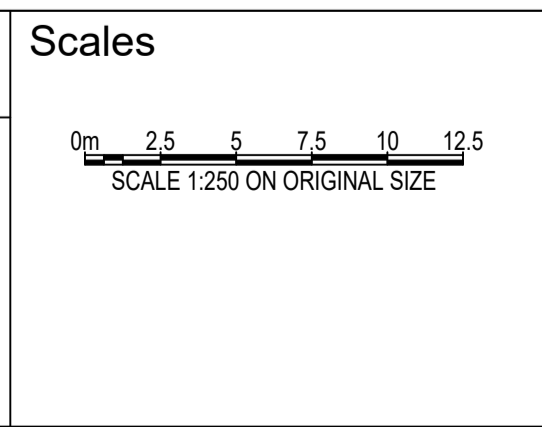
Reference Coordination Drawing					
Discipline	Drawing Title and Number	Date	Rev.		
ARCH					
STRUCT					
MECH					
ELEC					
HYD					
FIRE					
LANDS					
CIVIL					
SURVEY					

Quality Control					
DRWN	DATE	CHECKED	DATE	DESIGNED	DATE
CS	09.04.25	SH	09.04.25	CS	09.04.25
SH	09.04.25	CS	09.04.25	SH	09.04.25
SH	09.04.25	SH	09.04.25	SH	09.04.25
SH	09.04.25	SH	09.04.25	SH	09.04.25

WARNING: THE DECISIONS, DRAWINGS, SPECIFICATIONS AND THE COPYRIGHT HEREIN REMAIN THE SOLE INTELLECTUAL PROPERTY OF S&G CONSULTANTS PTY LTD AND MUST NOT BE USED, COPIED, ALTERED OR REPRODUCED WHOLLY OR IN PART IN ANY FORM WITHOUT THE WRITTEN CONSENT OF S&G CONSULTANTS PTY LTD

MEMBER
ENGINEERS AUSTRALIA
Chartered Professional Engineer

Dimensions not shown to be checked on site. Do not scale of this drawing. Positions of authorities mains and/or existing services are to be checked prior to commencement of work. Report any discrepancies to the consulting engineer for decision/clarification before proceeding with the work. This drawing is to be read in conjunction with the specifications and other consultants' drawings.



Client
LA SALLE GROUP

Architect
GELDER GROUP ARCHITECTS

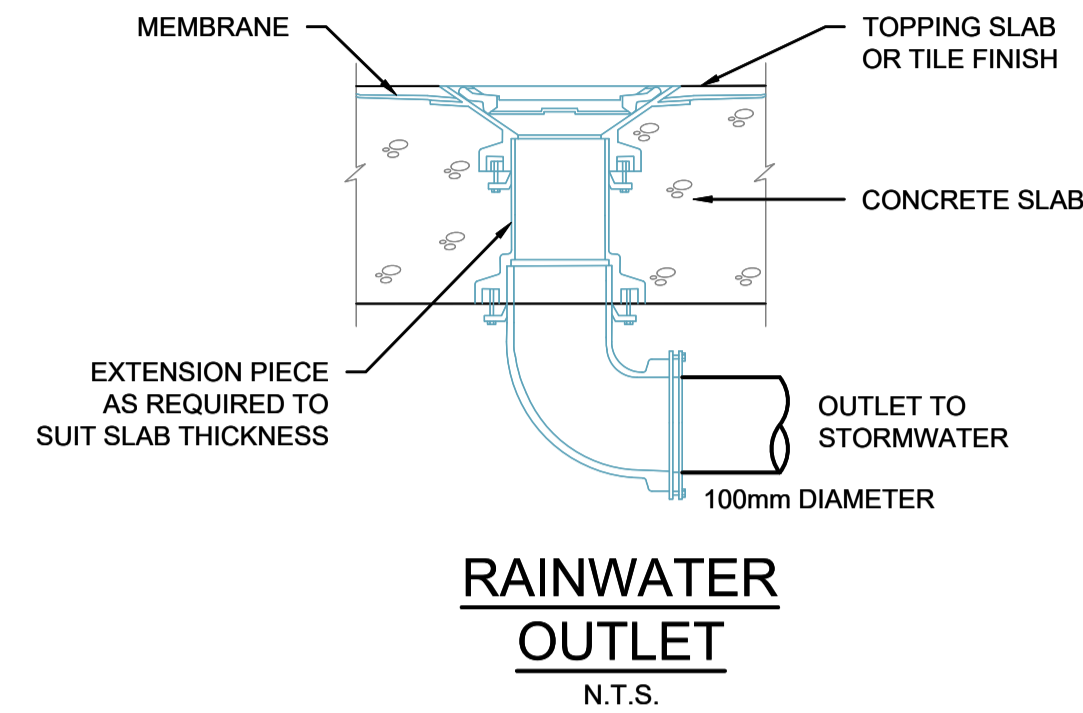
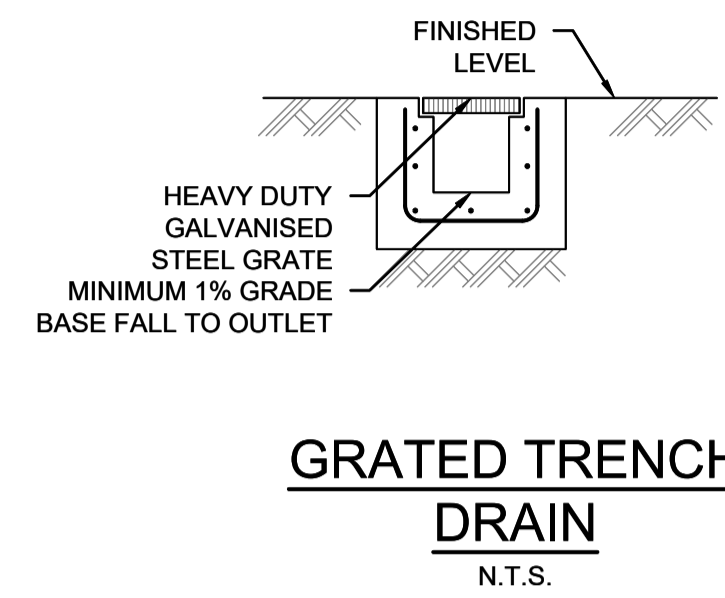
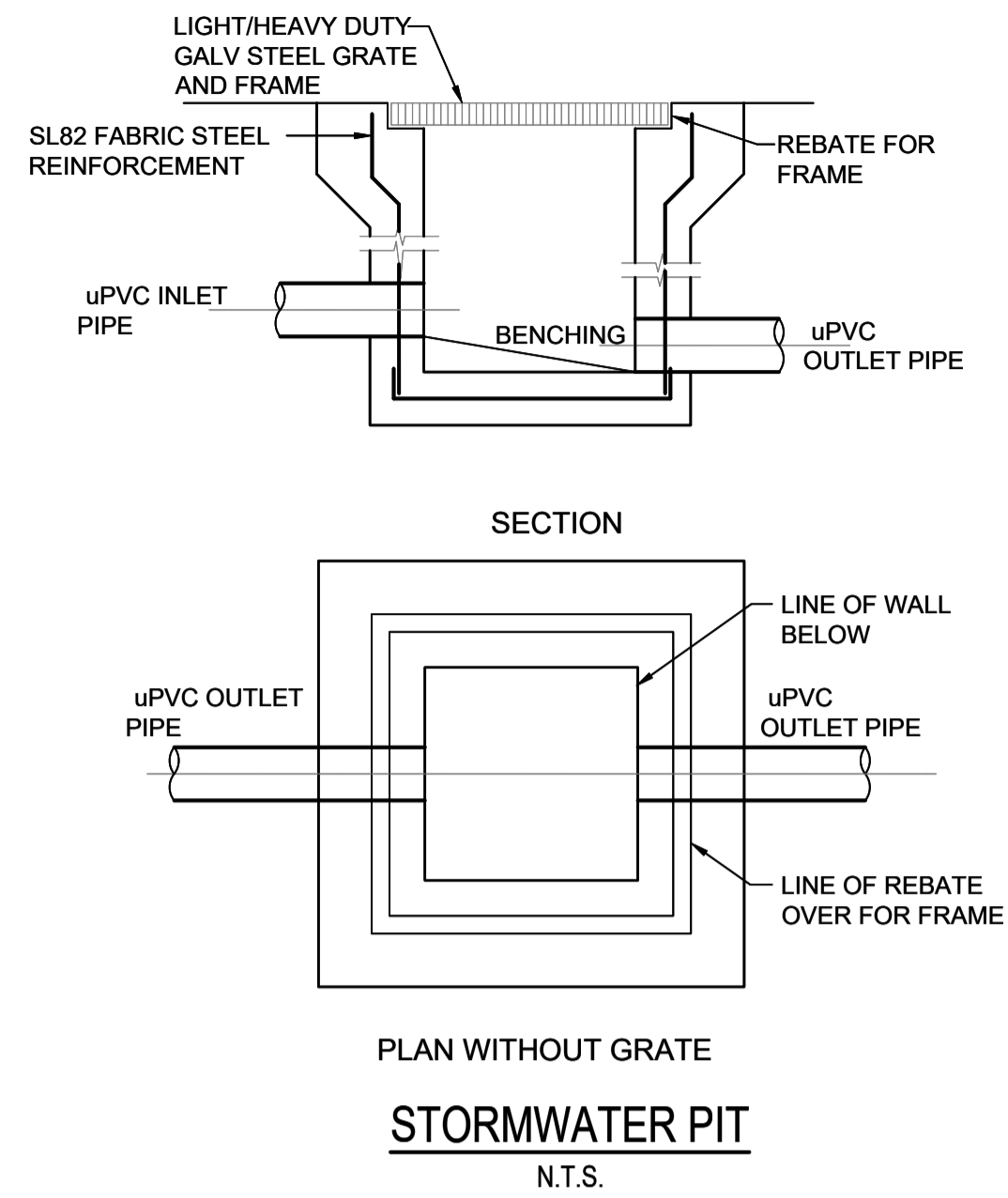


S&G CONSULTANTS PTY LTD
 SUITE 311, LEVEL 3
 480 PACIFIC HIGHWAY
 ST. LEONARDS, N.S.W. 2065
 T: +61 2 8883 4239
 Email: office@sgce.com.au
 Web: www.sgce.com.au
 A.B.N. 21 118 222 530

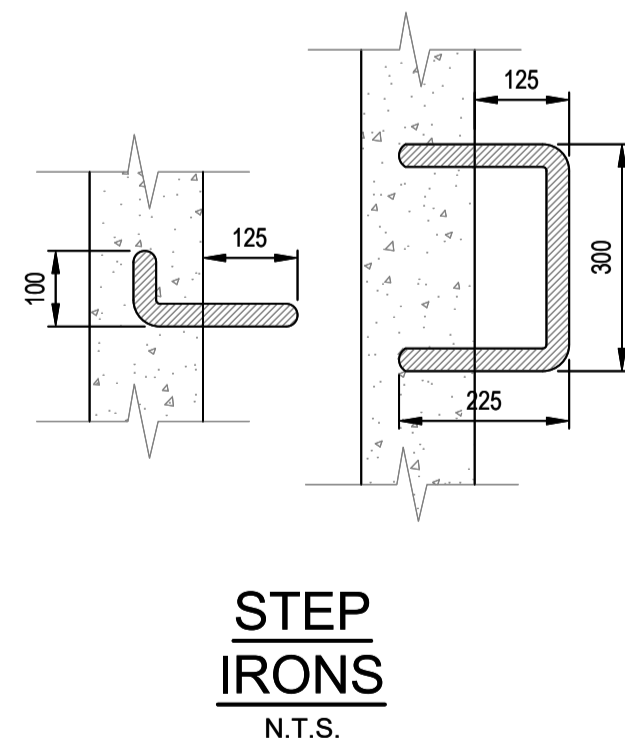
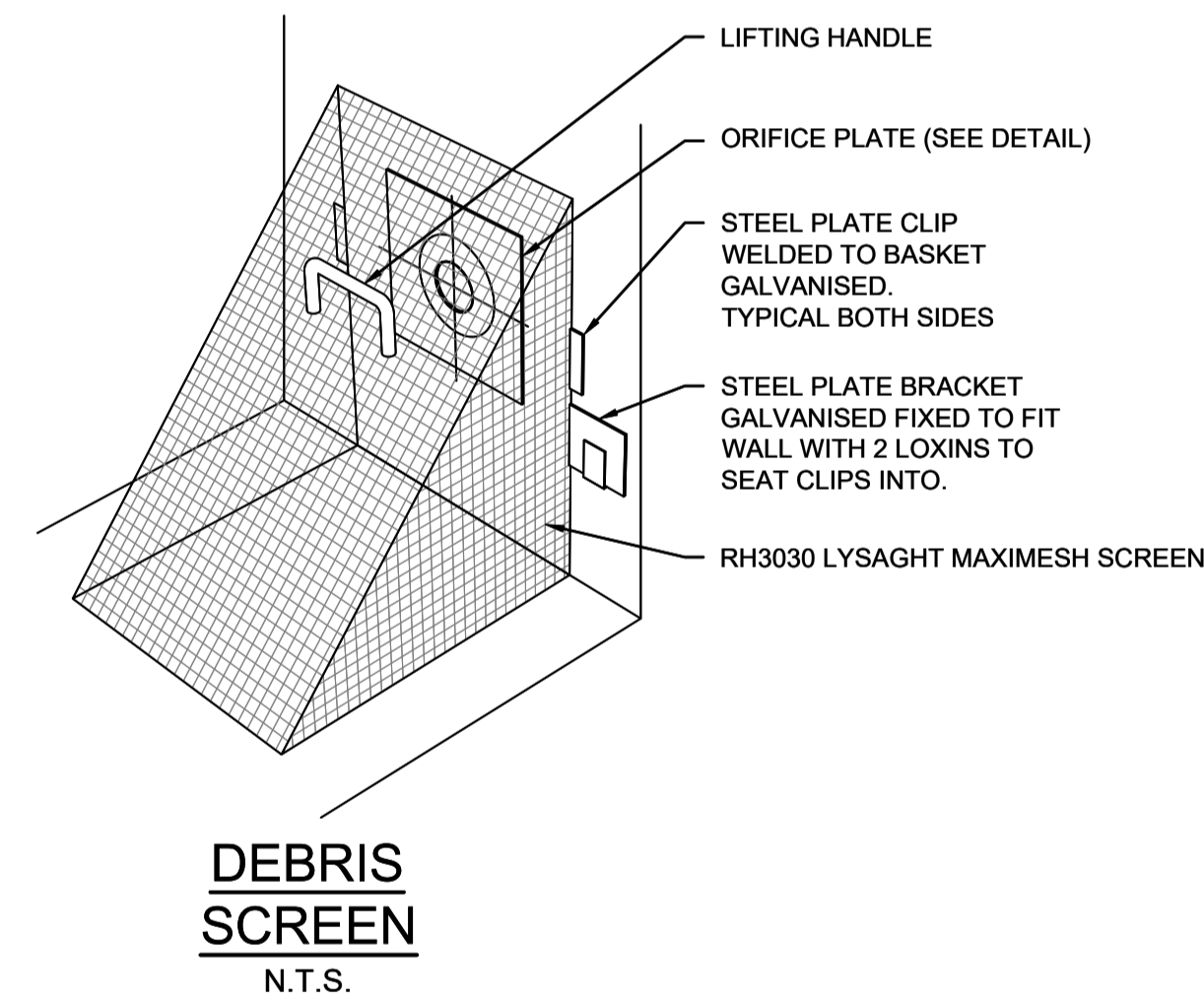
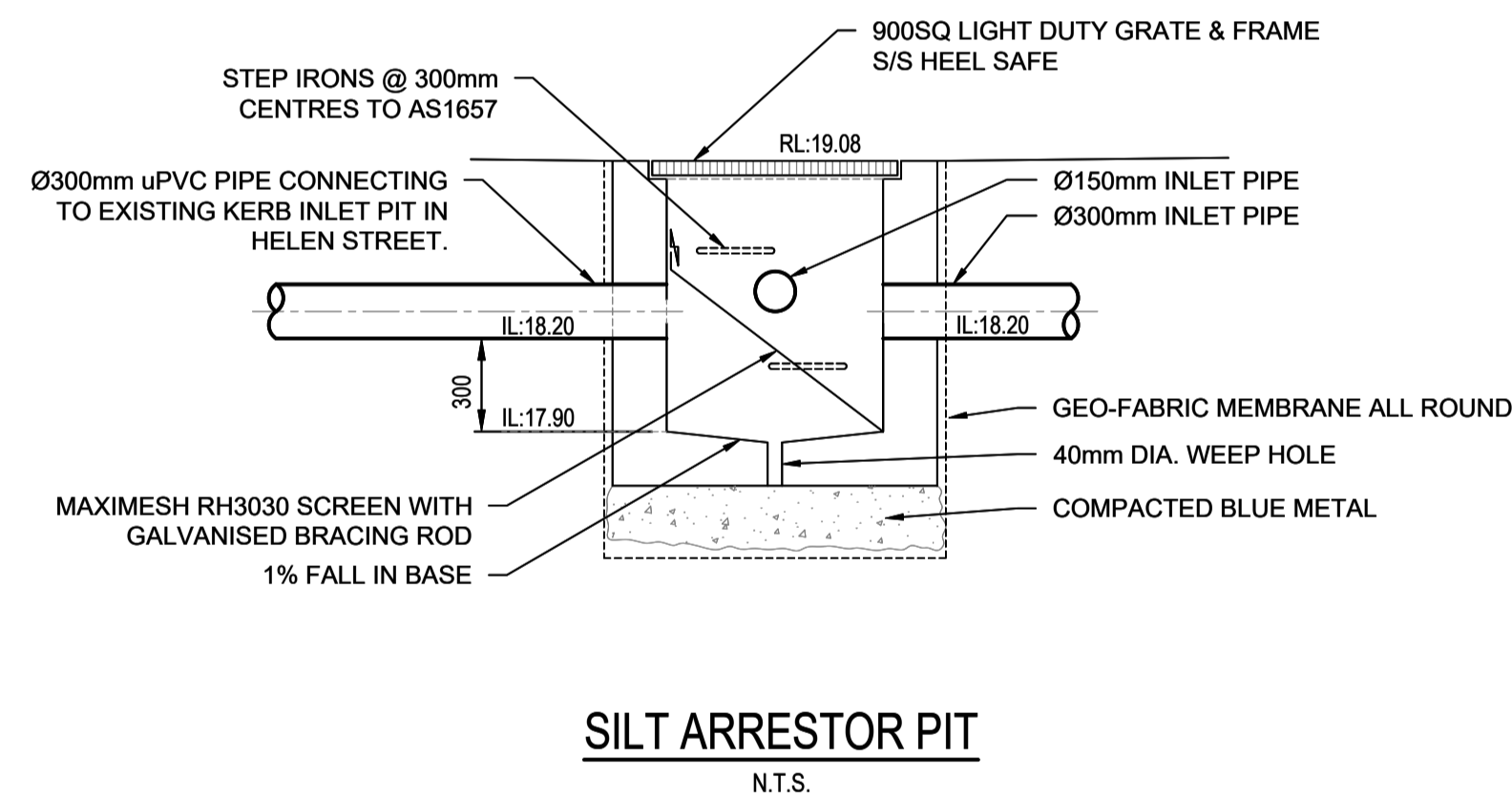
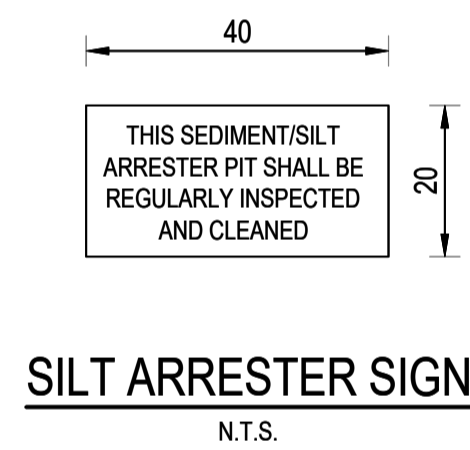
PROJECT
88 HELEN STREET, SEFTON
STORMWATER CONCEPT DESIGN

Status	ISSUED FOR DA		
Drawing Title	STORMWATER CONCEPT DESIGN ROOF PLAN		
Project No.	Set No. - Drg No.	Revision No.	
20240057	S01-SW302	A	

Grid	Datum	Sheet
	A.H.D.	04



SITEWORKS LEGEND	
	STORMWATER LINE
	STORMWATER LINE TO RAINWATER TANK
	SUBSOIL LINE
	STORMWATER RISING MAIN
	AUTHORITY SEWER LINE
	AUTHORITY WATER LINE
	AUTHORITY GAS LINE
	AUTHORITY OVER HEAD ELECTRICITY LINE
	AUTHORITY UNDERGROUND ELECTRICITY LINE
	AUTHORITY COMMS LINE
	GRADED SURFACE INLET PIT
	GRADED SURFACE INLET PIT WITH ENVIROPOD INSERT
	JUNCTION PIT
	GRADED TRENCH DRAIN
	RAINWATER OUTLET
	CLEAR OUT POINT
	DISH DRAIN OUTLET
	PLANTER DRAIN
	DOWNPIPE DROP
	DOWNPIPE
	WARNING LIGHT
	FINISH SURFACE LEVEL
ABBREVIATIONS:	
Ø or DIA	DIAMETER
CO	CLEAR OUT
DDO	DISH DRAIN OUTLET
DP	DOWNPIPE
e	EXISTING
FFL	FINISHED FLOOR LEVEL
GTD	GRADED TRENCH DRAIN
GSIP	GRADED SURFACE INLET PIT
IL	INVERT LEVEL
KIP	KERB INLET PIT
NGL	NATURAL GROUND LEVEL
OFF	OVERLAND FLOWPATH
OSD	ON-SITE DETENTION
RCP	REINFORCED CONCRETE PIPE
RL	REDUCED LEVEL
RWT	RAINWATER TANK
SW	STORMWATER
SWP	STORMWATER PIT
SWRM	STORMWATER RISING MAIN
SWS	STORMWATER SUMP
TOK	TOP OF KERB
TOW	TOP OF WALL
UPVC	



A:\Projects\2024\20240517_88 Helen Street - Stormwater Design\88 Helen Street - Stormwater Design\88 Helen Street - Stormwater Design.dwg
 1-preliminary 2-development application 3-construction certificate 4-tender 5-construction 6-other
 Issue Last revision title By Date Status
 A ISSUED FOR DA CS 09.04.25 02
 P02 PRELIMINARY ISSUE CS 24.02.25 01
 P01 PRELIMINARY ISSUE CS 25.11.24 01

Reference Coordination Drawing				
Discipline	Drawing Title and Number	Date	Rev.	
ARCH				
STRUCT				
MECH				
ELEC				
HYD				
FIRE				
LANDS				
CIVIL				
SURVEY				

Quality Control	
DRAWN	DATE
CS	09.04.25
CHECKED	DATE
SH	09.04.25
DESIGNED	DATE
CS	09.04.25
VERIFIED	DATE
SH	09.04.25
APPROVED	DATE
SH	09.04.25

ENGINEERS AUSTRALIA
 Chartered Professional Engineer
 MEMBER
 WARNING: THE DESIGNS, DRAWINGS, SPECIFICATIONS AND THE COPYRIGHT HEREIN REMAIN THE SOLE INTELLECTUAL PROPERTY OF S&G CONSULTANTS PTY LTD AND MUST NOT BE USED, COPIED, ALTERED OR REPRODUCED WHOLLY OR IN PART IN ANY FORM WITHOUT THE WRITTEN CONSENT OF S&G CONSULTANTS PTY LTD
 DIMENSIONS NOT SHOWN TO BE CHECKED ON SITE. DO NOT SCALE OF THIS DRAWING. POSITIONS OF AUTHORITIES MAINS AND/OR EXISTING SERVICES ARE TO BE CHECKED PRIOR TO COMMENCEMENT OF WORK. REPORT ANY DISCREPANCIES TO THE CONSULTING ENGINEER FOR DECISION/CLARIFICATION BEFORE PROCEEDING WITH THE WORK. THIS DRAWING IS TO BE READ IN CONJUNCTION WITH THE SPECIFICATIONS AND OTHER CONSULTANTS' DRAWINGS.

Scales

Client
LA SALLE GROUP

Architect
GELDER GROUP ARCHITECTS

S&G CONSULTANTS PTY LTD
 SUITE 311, LEVEL 3
 480 PACIFIC HIGHWAY
 ST. LEONARDS, N.S.W. 2065
 T: +61 2 8883 4239
 Email: office@sgce.com.au
 Web: www.sgce.com.au
 A.B.N. 21 118 222 530

PROJECT
 88 HELEN STREET,
 SEFTON
 STORMWATER CONCEPT DESIGN

Status	
ISSUED FOR DA	
Drawing Title	
STORMWATER CONCEPT DESIGN DETAILS SHEET	
Project No.	Set No. - Drg No.
20240057	S01-SW401
Revision No.	A

Grid	Datum	Sheet
	A.H.D.	05